

## Pre-Paint>Fuselage>Interior>Fit seatbelt anchors

### Objectives of this task:

This task shows how to fit the seatbelt anchors. While this is quite a simple task it is also an extremely important one – the seat belts *must* be anchored correctly because if you ever *really* need your seat belt (and here's hoping that you never do) it has to be attached to the airframe in the designed manner for maximum safety.

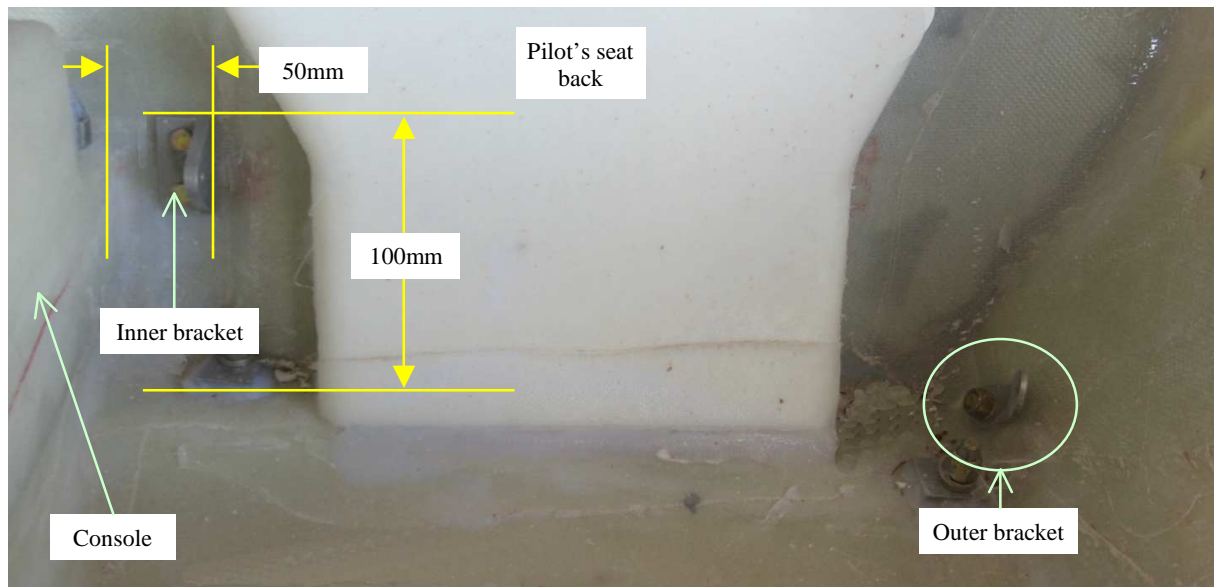
The photos that follow are of the pilot's seat: the same applies to the other seat but in reverse.

### Materials required:

Card # J9 'Seatbelts'

### Bottom anchor brackets

Both inner bottom anchor brackets are attached to the main beam that runs behind the seats.



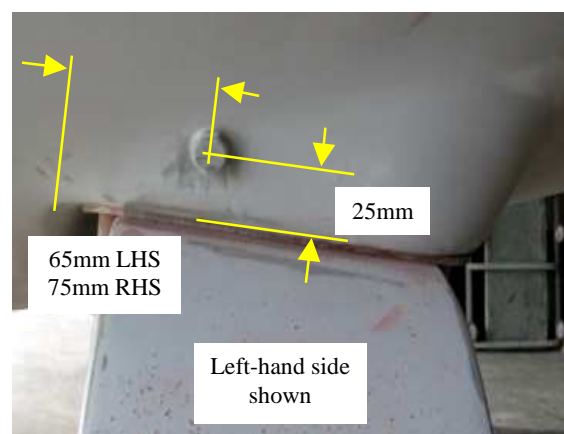
Start by marking a horizontal line 100mm up from the base of the main beam on the inside of each seat, and then mark a vertical line 50mm out from each side of the centre console.

Hold a bottom inner bracket inside and below where each pair of lines meet and drill a 3/16" hole through the top hole and slip a bolt through and then check each anchor bracket for square and drill the bottom hole. Fix each inner anchor bracket in place with AN3 bolts through the bracket, the beam, the rectangular backing plate, a washer and a Nyloc nut.

The bottom outer brackets are held with a single AN3 bolt and the hole is drilled from the outside of the fuselage: 25mm up from the main gear leg recess and 65mm back (left-hand side) and 75mm back (right-hand side) from the front of the recess: each bracket should sit in the lowest, rearmost corner inside.

Fix in place with an AN3 bolt through the fuselage from the outside, through the bracket with a flat washer and a Nyloc nut.

Tighten all the Nyloc nuts firmly.





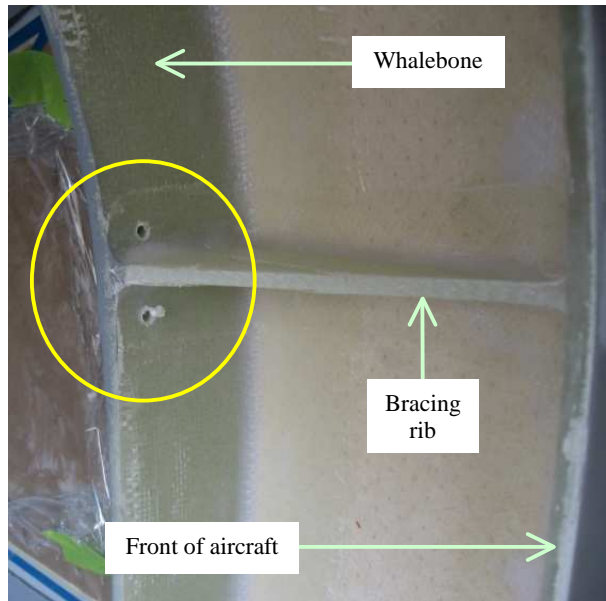
### **Top anchor brackets**

The top anchor brackets mount behind the whalebone with the centre of the bracket precisely level with the bracing rib in front of the whalebone as shown at right.

Hold the bracket in position and drill a 3/16" hole at the top of the bracket and slip a bolt through then line up the bottom of the bracket and drill the second hole.

The top bracket will not be finally fitted until the aircraft has been painted and the upholstery has been installed.

Pre-fit the bracket in place with an AN3 bolt through the bracket, the whalebone, the backing washer and a Nyloc nut.



Remove and store the top brackets for later final fitting.

This completes the *Pre-Paint>Fuselage>Interior>Fit seatbelt anchors* task.